

TSR/TSU/TSM I.S. Battery Pack Replacement Instructions



The power of data. Optimized.

⚠ WARNING – EXPLOSION HAZARD: DO NOT REPLACE BATTERY PACK WHEN AN EXPLOSIVE ATMOSPHERE IS PRESENT.

⚠ AVERTISSEMENT: NE PAS REMPLACER LES ACCUMULATEURS SI UNE ATMOSPHERE EXPLOSIVE PEUT ÊTRE PRÉSENTE.

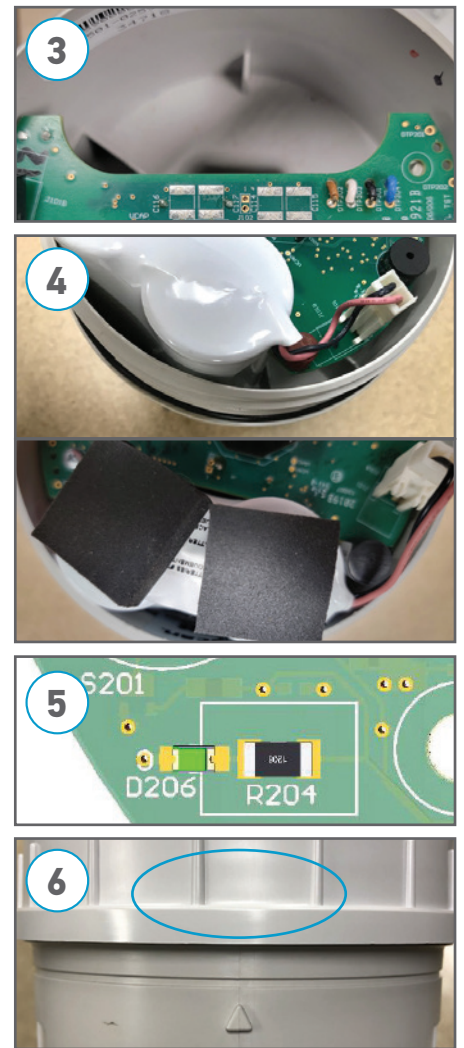
If necessary, remove monitor from tank and take to unclassified/non-hazardous area before removing enclosure cover.

⚠ WARNING: USE ONLY ATEK BATTERY PACK #TSTRB02000

⚠ AVERTISSEMENT: UTILISER UNIQUEMENT DES ACCUMULATEURS ATEK #TSTRB02000

Battery Pack Replacement

- 1 Ensure monitor is in a non-explosive atmosphere. If needed, remove monitor from tank and move it to a non-explosive environment.
- 2 Unscrew enclosure cover. Disconnect battery cable from printed circuit board and remove used battery pack.
⚠ WARNING: DO NOT OPEN WHEN AN EXPLOSIVE ATMOSPHERE IS PRESENT
⚠ AVERTISSEMENT: NE PAS OUVRIR EN CAS DE PRESENCE D'ATMOSPHERE EXPLOSIVE
- 3 Remove foam pieces that were in housing under original battery pack (if present).
- 4 Insert new battery pack and reconnect battery cable. Make sure two foam pieces are on top of battery pack. Use only ATEK battery pack - part # TSTRB02000.
- 5 After reconnecting battery cable a test LED D206 will light. Monitor will take a level reading and then report to ATEK Intelligence Platform (AIP). Once monitor has finished reporting its level measurement, test LED will go out. If report was not successful then LED will flash for a few seconds before going out.
- 6 Re-install cover. Ensure battery cable wiring is not pinched when cover is re-installed.
- 7 Reinstall monitor on tank.



**For questions or problems,
Contact TankScan Technical Support 877-847-7226**

Do not send used batteries to ATEK. Dispose of them in accordance with local guidelines and regulations.

223-0189-001 Rev. B 9/22 **⚠** WARNING: Cancer and Reproductive Harm - www.P65Warnings.ca.gov

10025 Valley View Road, Ste. 190
Eden Prairie, MN 55344 U.S.A.
www.atekaccess.com

Email: CCT@tankscan.com
Sales & Order Processing: 800-523-6996
Technical Support: 877-847-7226



Access the power of technology.