

# TSRT880 Tank Monitor Setup Instructions



The power of data. **Optimized.**

## Test Connection

- 1 Manual Activation (Recommended)**  
Prior to installing on a tank, select a spot near tank you are installing. Using provided rectangular magnet in the box, hold magnet over Tekelek logo near edge of lid for **at least 5 seconds** until a long beep is heard. Monitor will activate and connect to cellular. Contact TankScan Technical Support to confirm monitor has activated and a connection attempt was successful.

**Caution.** Holding magnet over logo for less than 5 seconds will put monitor into Bluetooth search mode, indicated by a double beep every second. Monitor will remain in this mode for approx. 5 minutes before going back to sleep, then monitor can be woken up manually again.

### Bluetooth Activation

A Bluetooth app from Tekelek can be downloaded from the app store and can be used to activate monitor. Scan QR code on outside of monitor box for Bluetooth instructions. Send the "Measure & Upload" command to the monitor to have it upload data to cloud. Contact TankScan Technical Support to confirm data has been received. Once confirmed, send the "Activate" command to activate monitor.



## Installation Considerations

Monitor needs to be mounted 12 inches from tank walls and inward protrusions such as cross beams, ribs, pipes, shafts, etc.

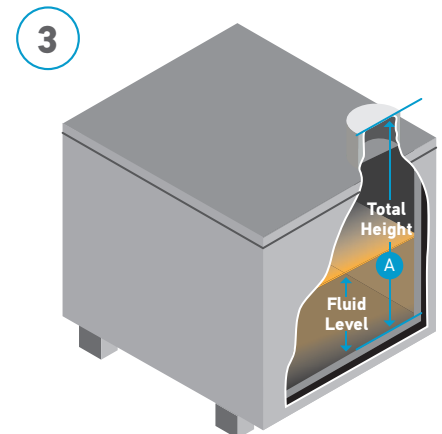
Do not allow liquid level to get closer than monitor's minimum sensing distance of 5.5 inches as liquid levels that close may produce inaccurate measurements.

Monitor must be installed level, pointing directly at the fluid.

## Take Tank Measurement

- 2** Remove any equipment from tank port to be used by monitor. TSRT880 monitor can be connected directly to tanks with a 2 inch NPT threaded opening. If mounting externally on a tank, included external mounting adapter will be used instead.
- 3** Measure total tank height **A** from inside bottom of tank to top of tank port. Record measurement to later report to TankScan Technical Support to complete installation.

Total Height: \_\_\_\_\_



# TSRT880 Tank Monitor Setup Instructions



The power of data. **Optimized.**

## Mount Monitor to Tank

**4** Screw monitor into tank port and hand tighten until secure.

If using external mounting adapter, find a flat, level area on tank that monitor can be installed upon. Make sure area is clean and dry. Peel off adhesive tape on bottom of adapter, mount it onto tank, and firmly press it down. Screw monitor into adapter and hand tighten until secure.

## Complete Installation

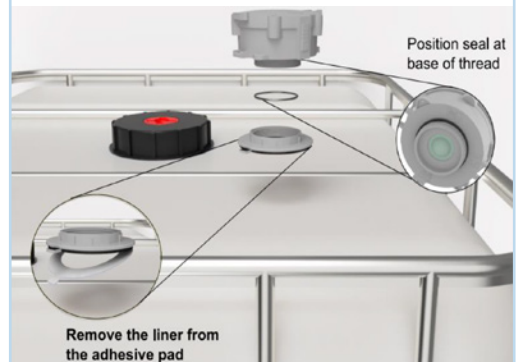
**5** While still at tank, call TankScan Technical Support at 877-847-7226 to complete installation process and perform a system test.

If asked to wake monitor by TankScan Technical Support, hold magnet over Tekelek logo near edge of lid for **at least 5 seconds** until a long beep is heard. Refer to photo from step 1.

## Invasive Mounting



## Non-Invasive Mounting



**For questions or problems –  
Contact TankScan Technical Support  
877-847-7226**

223-0209-000 Rev. A 6/24



WARNING: Cancer and Reproductive Harm - [www.P65Warnings.ca.gov](http://www.P65Warnings.ca.gov)

ATEK Access Technologies  
10025 Valley View Road, Ste. 190  
Eden Prairie, MN 55344 U.S.A.

PH: 1.800.523.6996  
FAX: 1.800.589.3705  
+1.218.829.9797

[www.atekaccess.com](http://www.atekaccess.com)

**ATEK** Access  
Technologies

Access the power of technology.

©2024 ATEK Access Technologies, LLC. All Rights Reserved. TankScan images and marketing materials are protected by various patents, copyrights and/or trademarks. ATEK assumes no responsibility for any errors which may appear in this document, reserves the right to change devices or specifications detailed herein at any time without notice, and does not make any commitment to update the information contained herein. No licenses to patents or other intellectual property of ATEK are granted by the Company in connection with the sale of TankScan products, expressly or by implication.