

TankScan | Powered by AquaPhoenix

Welcome to New Efficiencies in Tank Management

Save Time • Reduce Risk • Maximize Profits



Any Tank, Any Where, Any Time

With TankScan's web based solution you can access your tank information from your smart phone, desktop computer or laptop anywhere in the world at anytime. No need to load an app or software. Just login through an Internet browser. Now that's easy!



TankScan Technical Support

Available, experienced pre-sale, post-sale and online support.

Comprehensive support both pre-sale and post-sale/in-person and online. Our support team ensures a successful install, meaningful personal training, continuous improvement and proactive maintenance. Whether on the phone or on-line; our support is available and ready to guide you to an amazing and rewarding experience.

Online Support Videos



Online Support Documents



Phone Support



tankscan.com/videos

tankscan.com/contact

877-847-7226

Hardware

Complete, Modern Line of Cellular and Local Wireless Monitors, Gateways and Partner Solutions

Radar Monitors (TSM)

Radar – used for up to 40 ft tall tanks. Commonly deployed on diesel, gasoline and lubricant tanks.

Cellular is most commonly used for remote single tank applications.



Non-contact Monitors: Radar (TSR) and Ultrasonic (TSU)

Best used when a non-contact measurement is an advantage. Commonly deployed on DEF, water, chlorine, and specialty chemicals tanks and totes.

TSU and TSR - used for up to 12 ft tall tanks.

The Radar sensor has the added ability to be able to sense through plastic tank walls and is resistant to condensation.



Partner Solutions

Low-Cost Cellular Ultrasonic



Use on remote tanks with cellular coverage and in climates that remain above 32° F.

Wi-Fi Ultrasonic



For use in general purpose locations where only a Wi-Fi gateway is required.

Sensor to Satellite Gateway



Battery powered, internal antenna, 4-20mA input for level sensors. 1 per day reports.

Sensor to Cellular Gateway



Easily integrate specialty or existing level or other process sensors using 4-20mA or 0-10V signals.

Propane



Conveniently monitor propane tanks with this non-intrusive CID1 certified monitor.

Submersible Pressure



Battery powered monitor that is easily installed into tanks, has CID1 certification for hazardous locations, and utilizes cellular connectivity.

Gateways

C-Store Fuel Inventory Gateway (TSC)



Communicates with existing Automatic Tank Gauge (ATG) equipment placed for detecting fuel levels in underground storage tanks.

Local Wireless Gateways



Cellular

Ethernet

Connect up to 20 wireless monitors to the Internet using a cellular or Ethernet connections.

Please contact us with your unique needs at tankscansupport@aquaphoenixsci.com or 877-847-7226.

Dashboard

Intuitive, Powerful Tank Monitoring Dashboard



Critical Warning and Alerts

Dashboard is presorted placing tanks requiring immediate attention to the top of the list. Alerts are automatically sent to email or text messages to preselected user, based on chosen tank levels.

TankScan
Powered by AquaPhoenix

Views Grids Actions Craig

Tanks	Name	% Full	Full
▶	Acme #111	59%	611.18 gals
▶	Acme #173	61%	1214.29 gals
▶	Acme #177	89%	891.45 gals
▶	Acme #232	83%	833.26 gals
▶	Acme #51	84%	980.54 gals
▶	Acme #151	87%	8678.77 gals
▶	Acme #203	73%	730.78 gals
▶	Acme #3	93%	988.08 gals
▶	Acme #14	39%	3098.26 gals
▶	Acme #15	62%	7481.20 gals
▶	Acme #26	42%	918.73 gals
▶	Acme #27	47%	3023.94 gals
▶	Acme #31	21%	2120.90 gals
▶	Acme #32	71%	7500.63 gals

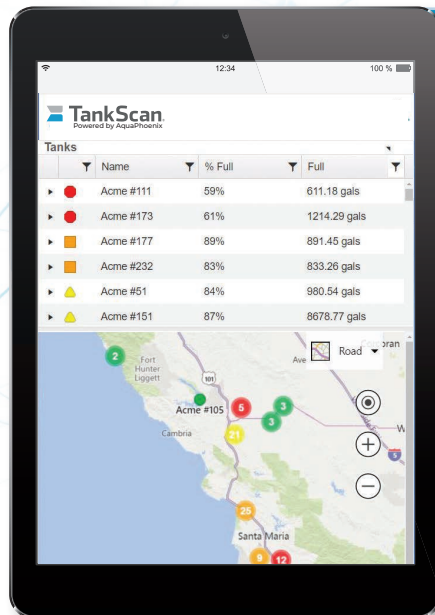
Reporting and Trending

Data is stored and can be easily accessed. The dashboard also has Restful API connections to move data to other locations if desired.



Locations at a Glance

Tanks are displayed on mapping software to help determine optimal routing and truck dispatching.



Status At a Glance

Dashboard is customizable to show, hide and add custom data columns. Can be easily filtered and sorted for tanks of interest.

TankScan
Powered by AquaPhoenix

Views Grids Actions Craig

Tanks	Status	Name	% Full	Full
▶	Unreported	Acme #19	76%	228.43 gals
▶	Unreported	Acme #23	70%	208.75 gals
▶	Unreported	Acme #230	51%	139.80 gals
▶	Critical	Acme #109	91%	207.41 gals
▶	Critical	Acme #111	59%	611.18 gals
▶	Critical	Acme #156	64%	334.50 gals
▶	Critical	Acme #173	61%	1214.29 gals
▶	Critical	Acme #237	53%	552.65 gals
▶	Warning	Acme #91	74%	180.50 gals
▶	Warning	Acme #102	57%	161.46 gals
▶	Warning	Acme #169	84%	487.98 gals
▶	Warning	Acme #177	89%	891.45 gals
▶	Warning	Acme #199	68%	155.80 gals
▶	Warning	Acme #222	35%	353.63 gals

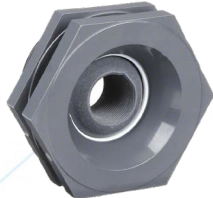
Accessories

Complete Your Solution With Additional Mounting and Measurement Options

Tank Risers and Fittings



Bulkhead Riser
1-1/2" x 4" H



Self Aligning Fitting
2" x 4" H



Flange 1-1/2"



Bulkhead Fitting 1-1/2"

Stiling Tubes



Stackable Tote
Stiling Tube



55 Gallon Drum
Stiling Tube

Additional Measurements for TSG Sensor Gateway



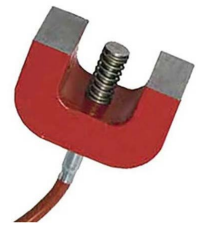
Non-Contact Radar
Level Sensor
Non-Contact Radar Sensor



Pressure Sensor
1/4" NPT Process Connection



Vibration/Temperature Sensor
Magnetic Connected Vibration and
Temperature Sensor



Temperature Sensor
Magnetic Connected
Temperature Sensor

Case Studies

Your Application, Our Monitor

Fuel Delivery & Inventory Management



Bulk Fuel Storage and Distribution



Diesel Generator Monitoring

Specialty Chemical & Agriculture Products



Diesel Exhaust (DEF) Solutions



De-Icer Monitoring

Lubricant Delivery & Inventory Management



Fast Lube Bulk Tank Inventory



Lubricant Distribution

Oil Field Support



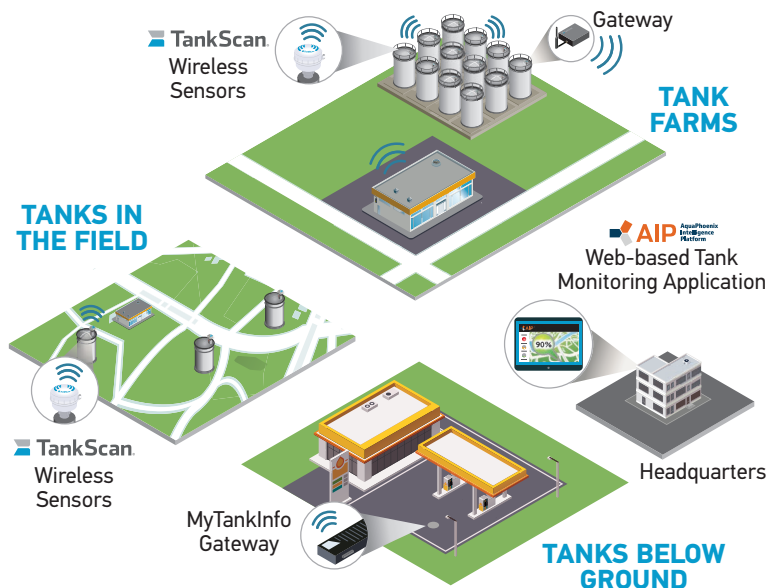
Saltwater Disposal Logistic Services



Fuel Tank Monitoring

Hear directly from those who worked with us visit www.tankscan.com/case-studies

Easy and Reliable Wireless Tank Level Monitoring



Tanks in Field

Service tanks in the field with accurate wireless level monitoring and alerts to reduce trucking-related costs, enhance inventory management and improve customer service.

Tank Farms

Manage tank farms or bulk storage tanks with accurate wireless level monitoring and alerts to eliminate the human factors of time, accuracy and risk to safety while improving inventory management.

Tanks Below Ground

Service your C-Store customers USTs connected to any Automatic Tank Gauge (ATG) with accurate level monitoring and alerts to reduce trucking-related costs, enhance inventory management and improve customer service.

Simple to Specify, Order and Install Monitors and Accessories

Sensor Technology Measurement				Measurement Range			Communication				Hazardous Location				
T	S	M	1	2	4	0	C	4	L	1	H	1			
							Labeling						Options		

SENSOR TECHNOLOGY						
TSR1	1000 Series - Non-Contact Radar					
TSM1	1000 Series MIR					
TSPS	Submersible Pressure					
TSD	Dial Gauge Reader					
TSUT	T Series – Ultrasonic					
TSRT	T-Series - Non-Contact Radar					
TSC	C-Store Gateway for Veeder Root					
TSG	Sensor to Cellular Gateway					
TSGS	Sensor to Satellite Gateway					
MEASUREMENT RANGE	TSR1	TSM1 SR	TSM1 TR	TSPS	TSD	TSUT
XXX	144"	60", 96"	144", 240", 300", 360", 420", 480	120", 401"	"J=Junior Size Gauge S=Senior Size Gauge"	144"
COMMUNICATION						
C4	VZW LTE CAT M			Avaialable for all Cellular Monitors		
C5	Aeris North America Multi-Carrier			Avaialable for all Cellular Monitors		
C8	Aeris Global Multi-Carrier			Available for TSPS, TSUT and TSRT Monitors		
R2	XBee Zigbee 2.4 GHz (not available on all series)			Available for TSR1 and TSM1		
W1	Wi-Fi (not available on all series)			Available for TSUT Ultrasonic Monitor		
S1	Satellite (1 per day report)			Available for TSG - Satellite Gateway		
LABELING						
L1	AquaPhoenix Standard					
HAZARDOUS LOCATION						
H0	Unclassified					
H1	Available for TSM1, TSRT, TSD and TSPS Sensor Technologies					
OPTION						
A	Remote Cellular Antenna			Available for TSM1 and TSR1 Sensor Technologies		
G	Global Positioning			Available for TSM1 and TSR1 Sensor Technologies		
R	Remote Battery Pack (For 240" and taller tanks)			Available for TSM1 Non Hazardous Sensor Technologies		

SR = Short Range | TR = Tall Range

220-0004-000 Rev. E 7/23/2025

AquaPhoenix Scientific
860 Gitts Run Road
Hanover, PA 17331

PH: 877-847-7226

www.tankscan.com



AquaPhoenix
S C I E N T I F I C

©2025 AquaPhoenix. All Rights Reserved. TankScan images and marketing materials are protected by various patents, copyrights and/or trademarks. AquaPhoenix assumes no responsibility for any errors which may appear in this document, reserves the right to change devices or specifications detailed herein at any time without notice, and does not make any commitment to update the information contained herein. No licenses to patents or other intellectual property of AquaPhoenix are granted by the Company in connection with the sale of TankScan products, expressly or by implication.