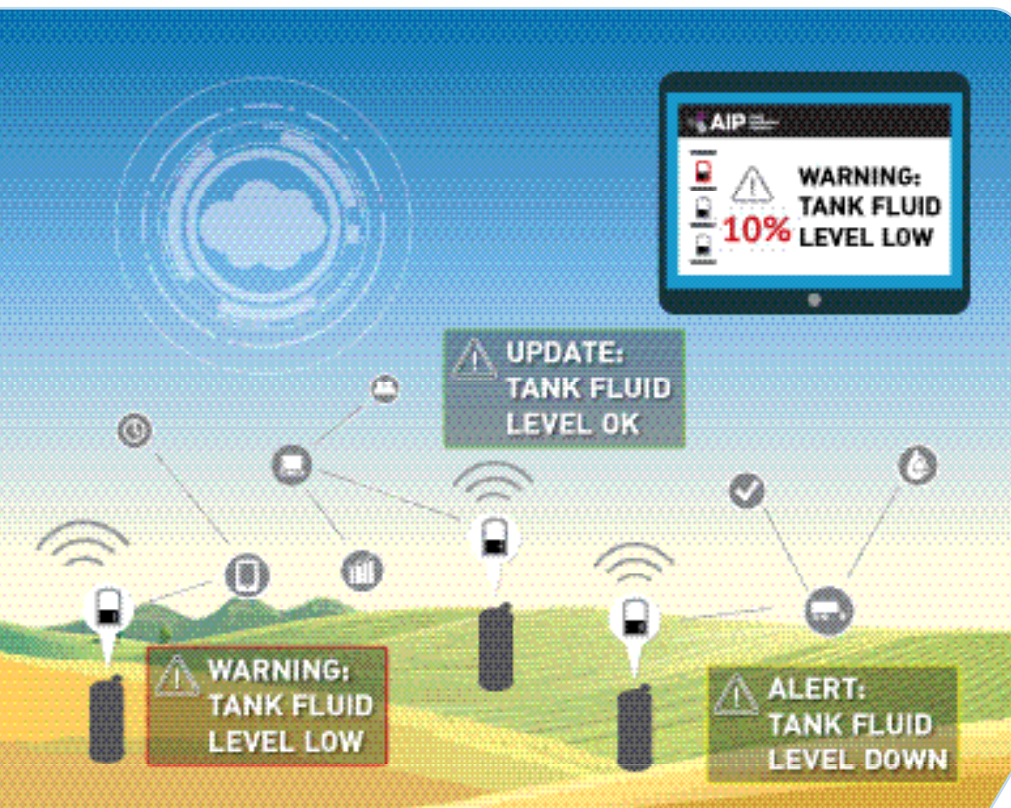


# Satellite Sensor Gateway Monitoring System

**TankScan** | Powered by AquaPhoenix

The Satellite Sensor Gateway is a fully integrated, battery powered solution, with a 4-20mA analog input and satellite connectivity. You choose one of our sensors or bring your own. Just power on, and you have remote sensor data on the web. This gateway is intended for outdoor use only and offers 4 readings per day with 1 satellite upload per day. Where cellular is available, we recommend one of our cellular monitors, but for extremely remote locations this is a perfect fit. Just position the gateway directly under the sky and expect the potential for some delays in data during stormy weather.

Setup of the system and web-based software is included. The software has unlimited users, historical data trends, will email or text on alert conditions and is purchased on an annual SAAS (Software as a Service) subscription.



## Optimize your routes

Accurate tank data ensures just-in-time collections and deliveries.

## Optimize your efficiencies

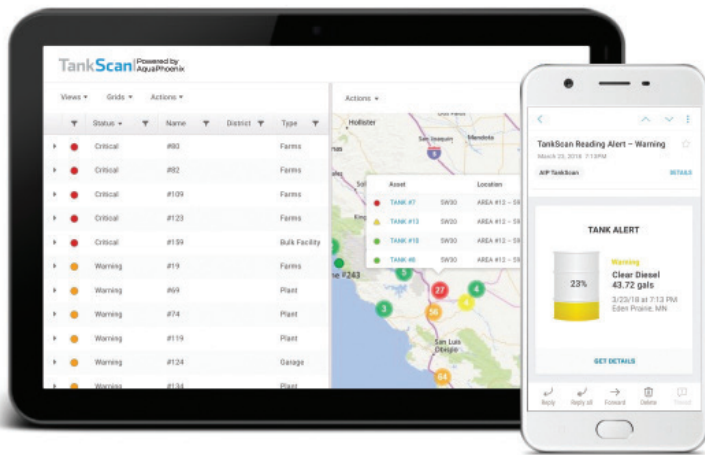
Reduce labor and transportation costs associated with manual tank measurement.

## Optimize your growth

Add customers without having to add more trucks or drivers.

## Optimize your service

Know when your customers' tanks need to be serviced before they do.



## AquaPhoenix Intelligence Platform (AIP) Capabilities

Web-based software can be accessed from any Internet-connected computer.

- Scales from 1 to over 100,000 tanks
- User-friendly dashboard displays accurate measurements across all tanks
- Users can view multiple tanks to simplify site monitoring
- Customizable email alerts provide notification when preset levels are reached
- Multiple users can be authorized to access various levels of data
- Analyze tank data with timely reports

## Markets

Extremely Remote Tanks or Sensing needs

## SPECIFICATIONS

Inputs	(1) Analog Input for 2-Wire Loop Powered 4-20mA Sensors
Connector	Screw-fastened Euroblock Terminal
Resolution	16-bit
Output	Current Reading, Battery, and Temperature
Radio Communication	Satellite
Power Requirements	2xAA Lithium Batteries, Included
Construction	Rugged IP65 Rated, UV Resistant Enclosure
Operating Temperature	-22 °F to 158 °F
Weight	260g
Approvals	FCC, RCM, RoHS
Product Warranty	1 Year

## ORDERING INFORMATION

Model Information	TSGM001S1L1H0 – Gateway TSGP102138 – 138" Range Pressure Sensor TSGP102492 – 492" Range Pressure Sensor
-------------------	---

201-0179-000 Rev. B 5/25



WARNING: Cancer and Reproductive Harm - [www.P65Warnings.ca.gov](http://www.P65Warnings.ca.gov)

AquaPhoenix Scientific  
860 Gitts Run Road  
Hanover, PA 17331

PH: 877-847-7226

[www.tankscan.com](http://www.tankscan.com)



**AquaPhoenix®**  
S C I E N T I F I C

©2025 AquaPhoenix. All Rights Reserved. TankScan images and marketing materials are protected by various patents, copyrights and/or trademarks. AquaPhoenix assumes no responsibility for any errors which may appear in this document, reserves the right to change devices or specifications detailed herein at any time without notice, and does not make any commitment to update the information contained herein. No licenses to patents or other intellectual property of AquaPhoenix are granted by the Company in connection with the sale of TankScan products, expressly or by implication.

VIEW OUR FULL PRODUCT LINE AT  
[TANKSCAN.COM](http://TANKSCAN.COM)