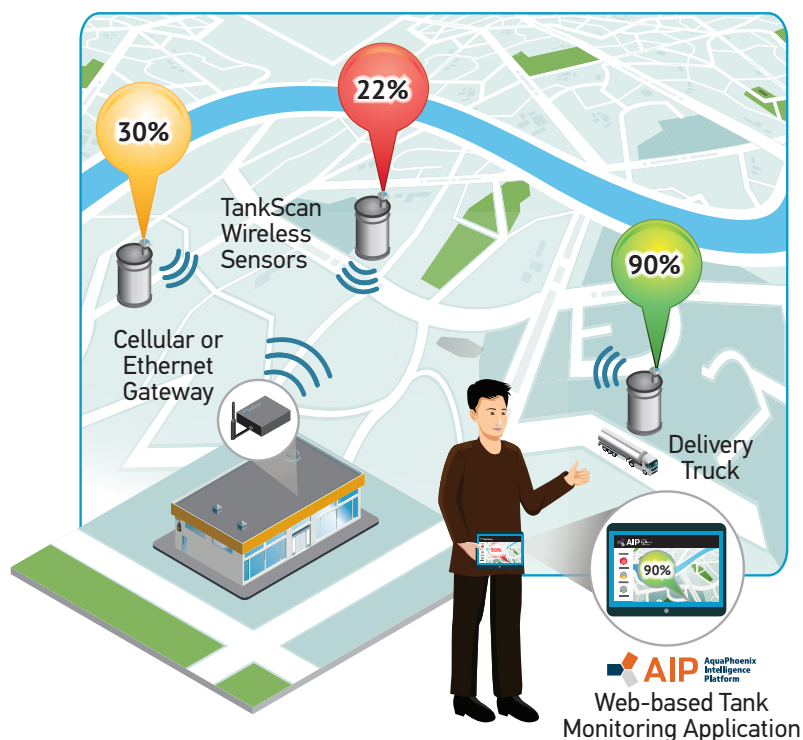


# TankScan® Gateway Family

**TankScan** | Powered by AquaPhoenix

The TankScan wireless tank monitoring solution gives you all the tools to check fluid levels in multiple tanks, across multiple sites, all from your computer or smartphone. A gateway provides a cost-effective method to take reports from multiple TankScan monitors and send them to the AquaPhoenix Intelligence Platform (AIP) web portal using a single connection. In the case of a cellular connection this means having only one cellular plan and bill. TankScan gateways are always on listening for tank level reports from TankScan monitors. Whenever a monitor wakes up and sends its report, the gateway receives, repackages and forwards the report to the AIP via the Internet. The TankScan gateway family offers a variety of ways to connect to the Internet using Ethernet, Wi-Fi, or cellular.

SPECIFICATIONS	INDOOR WI-FI (ALL MODELS)	INDUSTRIAL ETHERNET	INDUSTRIAL CELLULAR
Radio Range	100 ft	1000 ft	1000 ft
Tier	Economical	Conventional	Premier
Environment	Indoor	Industrial	Industrial
# of Monitors	50	20	20



## Benefits

- Cost-effective architecture requires only one gateway and connection for multiple monitors
- Flexible connectivity provides most options in the market
- Reduce, or even eliminate cellular fees
- Optional antenna lengths meet all installation requirements

## Applications – Indoor

- Retail establishments
  - Automotive service centers
  - Warehouses

## Applications – Industrial

- Agriculture
- Aviation
- Bulk plants
- Commercial
- Fueling stations
- Manufacturing



SPECIFICATIONS	INDOOR ETHERNET	INDOOR CELLULAR	INDUSTRIAL ETHERNET	INDUSTRIAL CELLULAR
Part Number	TEKWR01000	TEKWR02000 (Verizon) TEKWR03000 (AT&T)	TSGD000R2L1H0	TSGD001R2L1H0 (Verizon)
				TSGD002R2L1H0 (AT&T)
				TSGD003R2L1H0 (Canada)
Internet Connectivity	Ethernet	Cellular	Ethernet	Cellular
Monitor	Wi-Fi	Wi-Fi	RF	RF
Antenna	Internal	Remote	External, Remote Optional	External, Remote Optional
Radio Range	100 ft	100 ft	1000 ft	1000 ft
# of Monitors	50	50	20	20
Monitor Compatibility	TSUT750	TSUT750	TSR1000 /TSU/TSM	TSR1000/TSU/TSM
Setup	Requires Site Configuration of Wi-Fi Parameters	Requires Site Configuration of Wi-Fi Parameters	Ready to Go Out-of-the-box	Ready to Go Out-of-the-box
Construction	Plastic Enclosure (Indoor Use)	Metal Enclosure (Indoor use)	Metal Enclosure (Industrial use)	Metal Enclosure (Industrial use)
Operating Temperature	-10°C to +50°C (14°F to 122°F)	-20°C to +70°C (-4°F to 158°F)	-30°C to +70°C (-22°F to 158°F)	-30°C to +70°C (-22°F to 158°F)

