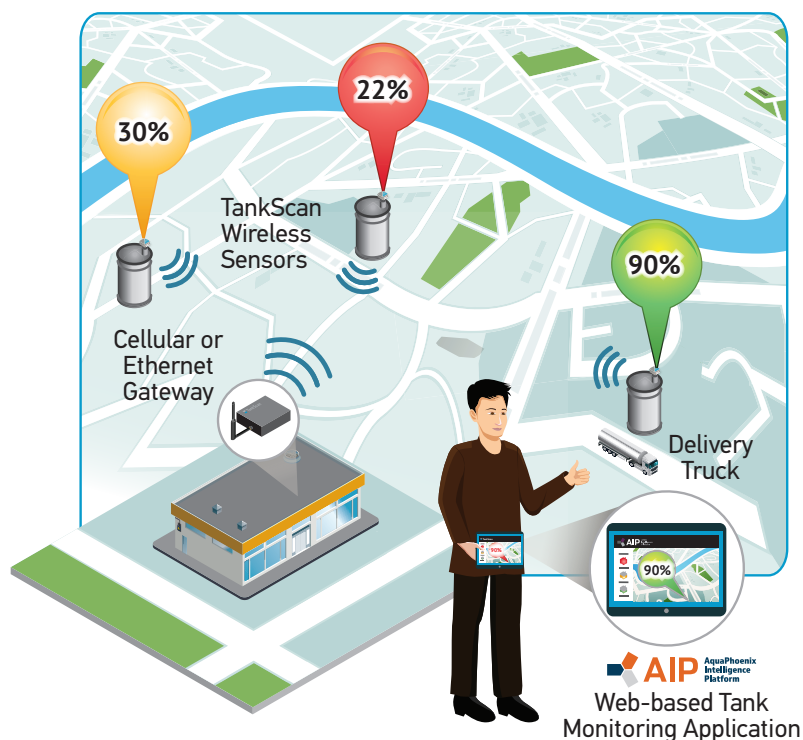


TankScan® Gateway Family

TankScan | Powered by AquaPhoenix

The TankScan wireless tank monitoring solution gives you all the tools to check fluid levels in multiple tanks, across multiple sites, all from your computer or smartphone. A gateway provides a cost-effective method to take reports from multiple TankScan monitors and send them to the AquaPhoenix Intelligence Platform (AIP) web portal using a single connection. In the case of a cellular connection this means having only one cellular plan and bill. TankScan gateways are always on listening for tank level reports from TankScan monitors. Whenever a monitor wakes up and sends its report, the gateway receives, repackages and forwards the report to the AIP via the Internet. The TankScan gateway family offers a variety of ways to connect to the Internet using Ethernet, Wi-Fi, or cellular.

SPECIFICATIONS	INDOOR WI-FI (ALL MODELS)	INDUSTRIAL ETHERNET	INDUSTRIAL CELLULAR
Radio Range	100 ft	1000 ft	1000 ft
Tier	Economical	Conventional	Premier
Environment	Indoor	Industrial	Industrial
# of Monitors	50	20	20



Benefits

- Cost-effective architecture requires only one gateway and connection for multiple monitors
- Flexible connectivity provides most options in the market
- Reduce, or even eliminate cellular fees
- Optional antenna lengths meet all installation requirements

Applications – Indoor

- Retail establishments
 - Automotive service centers
 - Warehouses

Applications – Industrial

- Agriculture
- Aviation
- Bulk plants
- Commercial
- Fueling stations
- Manufacturing



SPECIFICATIONS	INDOOR ETHERNET	INDOOR CELLULAR	INDUSTRIAL ETHERNET	INDUSTRIAL CELLULAR
Part Number	TEKWR01000	TEKWR02000 (Verizon) TEKWR03000 (AT&T)	TSGD000R2L1H0	TSGD001R2L1H0 (Verizon)
				TSGD002R2L1H0 (AT&T)
				TSGD003R2L1H0 (Canada)
Internet Connectivity	Ethernet	Cellular	Ethernet	Cellular
Monitor	Wi-Fi	Wi-Fi	RF	RF
Antenna	Internal	Remote	External, Remote Optional	External, Remote Optional
Radio Range	100 ft	100 ft	1000 ft	1000 ft
# of Monitors	50	50	20	20
Monitor Compatibility	TSUT750	TSUT750	TSR1000 /TSU/TSM	TSR1000/TSU/TSM
Setup	Requires Site Configuration of Wi-Fi Parameters	Requires Site Configuration of Wi-Fi Parameters	Ready to Go Out-of-the-box	Ready to Go Out-of-the-box
Construction	Plastic Enclosure (Indoor Use)	Metal Enclosure (Indoor use)	Metal Enclosure (Industrial use)	Metal Enclosure (Industrial use)
Operating Temperature	-10°C to +50°C (14°F to 122°F)	-20°C to +70°C (-4°F to 158°F)	-30°C to +70°C (-22°F to 158°F)	-30°C to +70°C (-22°F to 158°F)

201-0137-000 Rev. C 7/23/2025  WARNING: Cancer and Reproductive Harm - www.P65Warnings.ca.gov

AquaPhoenix Scientific
860 Gitts Run Road
Hanover, PA 17331

PH: 877-847-7226

www.tankscan.com



AquaPhoenix®
S C I E N T I F I C

©2025 AquaPhoenix. All Rights Reserved. TankScan images and marketing materials are protected by various patents, copyrights and/or trademarks. AquaPhoenix assumes no responsibility for any errors which may appear in this document, reserves the right to change devices or specifications detailed herein at any time without notice, and does not make any commitment to update the information contained herein. No licenses to patents or other intellectual property of AquaPhoenix are granted by the Company in connection with the sale of TankScan products, expressly or by implication.