

TSU Tank Monitor Setup Instructions

with Customer Supplied SIM Card

TankScan | Powered by AquaPhoenix

IMPORTANT: To avoid having to completely reinstall these monitors, TankScan Technical Support must be called at 800-523-6996 prior to moving forward with any of these installation procedures. Do not begin the installation process without calling TankScan first.

Contents:

- TSU Tank Monitor
- Magnet Wand - PN: TCU003
- Hex Wrench - PN: TCU004
- 1" x 2" NPT Adapter - PN: TCU001 (5 ft)
- Battery, PN: TCU001

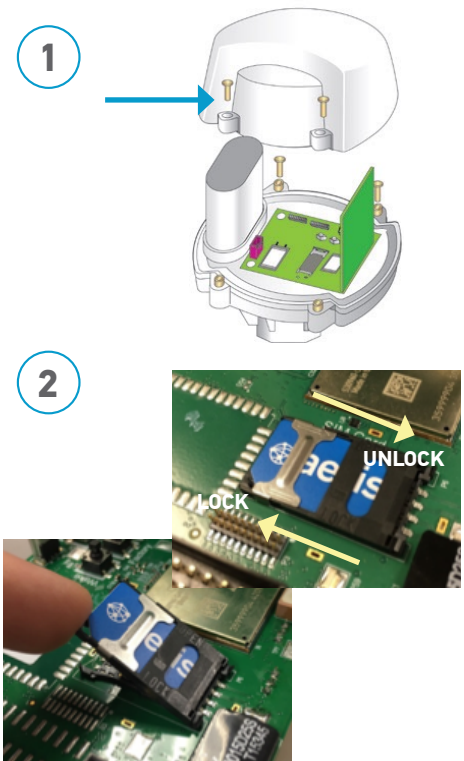
Equipment Required:

- PC with Internet Access
- SIM Card
- A-to-B USB Cable
- Terminal Program (such as PuTTY or TeraTerm)



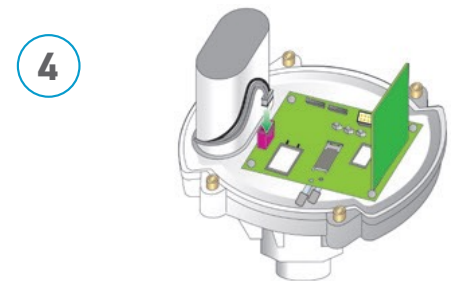
Insert SIM Card

- 1 Unscrew four retaining screws and remove enclosure cover.
- 2 Insert SIM card into SIM card slot on TSU board. Move metal bar towards bottom of card holder and pull it up to insert SIM card into holder. Flat end of SIM card goes in first. Make sure contacts on card are facing down.
- 3 Lock SIM card in place by pushing down on SIM card and pushing metal bar towards top of card holder.



Connect Battery

- 4 Connect battery cable to connector on TSU board. Ensure battery's wiring is not pinched when installing cover.



TSU Tank Monitor Setup Instructions

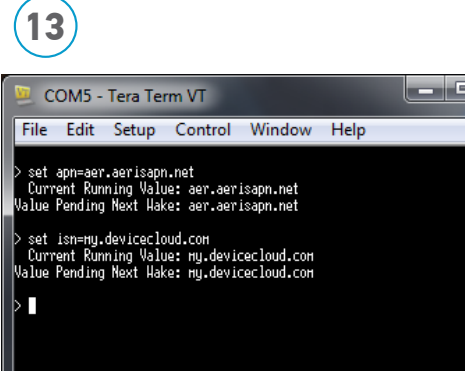
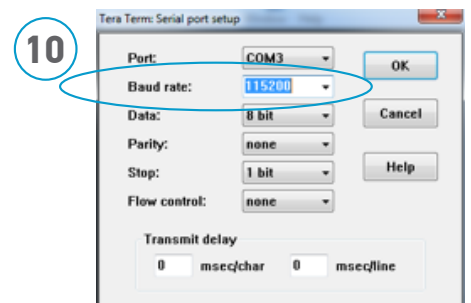
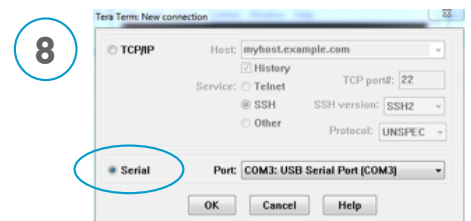
with Customer Supplied SIM Card

TankScan | Powered by AquaPhoenix

Set APN on TSU Monitor

Contact the SIM card's cellular provider if the APN of the SIM card is not known.

- 5 If not already installed, download and install a terminal program such as TeraTerm or PuTTY. TeraTerm can be downloaded at <http://tssh2.osdn.jp/index.html.en>
- 6 Connect TSU board to a computer via USB port using a type A-to-B USB cable.
- 7 Open up a terminal program on a computer.
- 8 Check **Serial** option and select port TSU board is connected to (in this case, it is connected to COM3)
- 9 Once terminal window pops up, go to **Setup > Serial Port**.
- 10 Change **Baud rate** to 115200 and click **OK**.
- 11 Press **Wake** button on TSU board and a > symbol should appear in the window.
- 12 In terminal, type the following:
 - set apn = [SIM card APN]
 - set isn=my.devicecloud.com
- 13 Once completed, terminal will look similar to image on right (image showing a sample SIM application).
- 14 TSU monitor will go to sleep and immediately wake up to make changes. After TSU completes changes, it goes back to sleep.
- 15 TSU monitor is now provisioned and ready to be installed.



TSU Tank Monitor Setup Instructions

with Customer Supplied SIM Card

TankScan | Powered by AquaPhoenix

Take Measurements

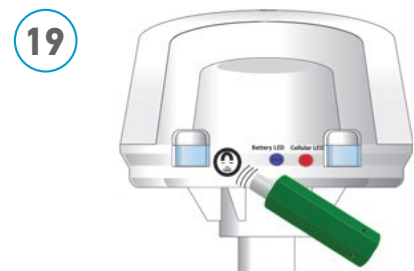
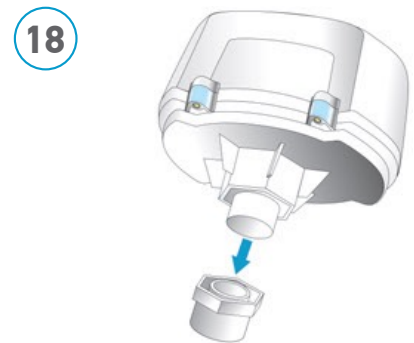
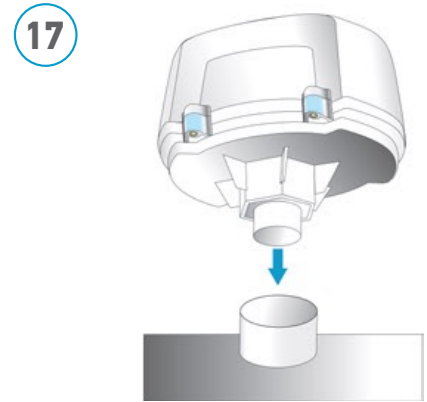
- 16** Measure tank dimensions and fluid level of the tank at the time of installation. Record these measurements in the TankScan Site Install Data Form. Download at www.tankscan.com/resources/documentation.

Mount TSU Monitor

- 17** TSU can be connected directly to tanks with a 1" NPT threaded opening as shown.
- 18** For tanks with a 2" threaded opening, first connect included 1-to-2" NPT adapter to TSU monitor, then attach unit to tank as shown.
- 19** Swipe magnet decal on TSU monitor with magnet wand. TSU will wake up and send a report which will take several seconds to complete. Confirm LED activity per monitor status chart below.
- 20** Call TankScan Technical Support at 800-523-6996 after swiping monitor to verify fluid level accuracy and to complete monitor setup.
NOTE: Step 20 must be completed for monitor to report level properly.

Monitor Status Chart

LED	COLOR AND LIGHT PATTERN	DESCRIPTION
Battery LED	Blink Red	Battery Health - Weak
	Blink Blue	Battery Health - Strong
Cellular LED	Blink Red	Not Registered to the Cellular Network
	Blink Blue (1 second ON - 1 second OFF)	Registered to the Cellular Network
	Glow Blue (for 3 seconds)	Data has been Successfully Sent



223-0159-000 Rev. B 7/16

AquaPhoenix Scientific
860 Gitts Run Road
Hanover, PA 17331

PH: 877-847-7226

www.tankscan.com



©2025 AquaPhoenix. All Rights Reserved. TankScan images and marketing materials are protected by various patents, copyrights and/or trademarks. AquaPhoenix assumes no responsibility for any errors which may appear in this document, reserves the right to change devices or specifications detailed herein at any time without notice, and does not make any commitment to update the information contained herein. No licenses to patents or other intellectual property of AquaPhoenix are granted by the Company in connection with the sale of TankScan products, expressly or by implication.