

Partner Solution: Wi-Fi Ultrasonic Monitoring



The power of data. **Optimized.**

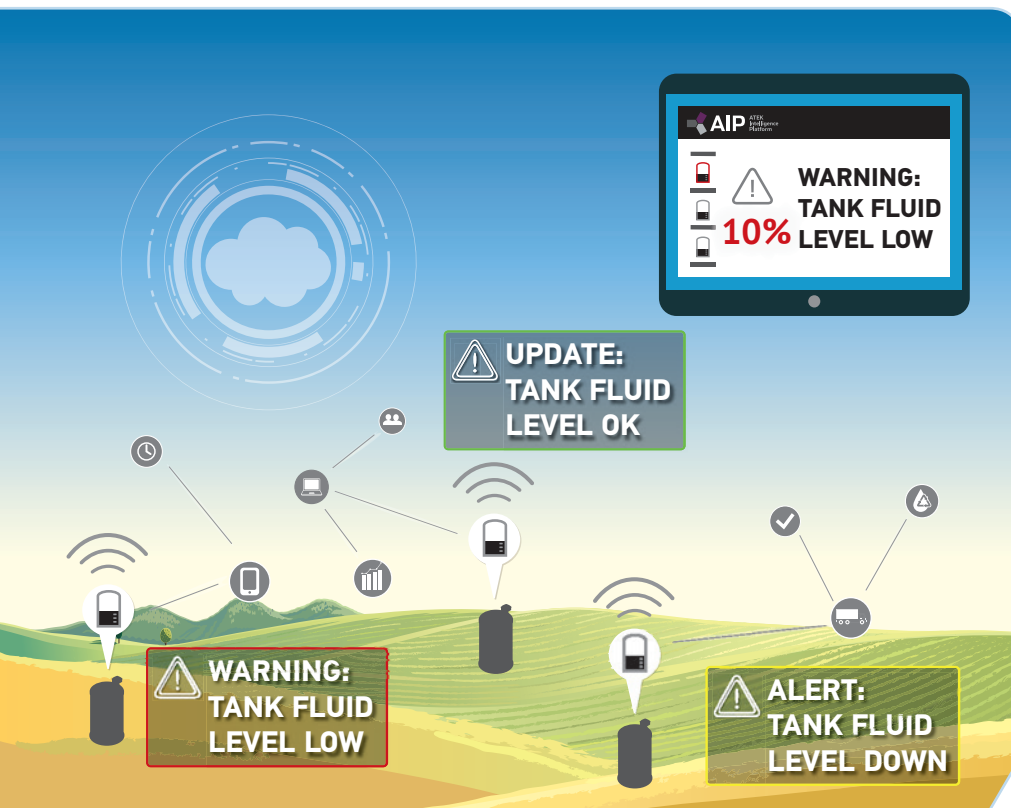
The TankScan TSU 750 Series WiFi Ultrasonic Partner Solution is ideally suited for remote customer tanks located in climates that remain above 0° F. The non-contact ultrasonic level sensor is fully-integrated into the battery-powered device, which can be installed in general purpose locations where only power for a Wi-Fi gateway is required.

The monitors collect data 4 times per day and report once daily. Manual and immediate reports can be generated by passing a magnet across the hot spot on the device. The unit mounts to a tank in a 2" threaded port and requires a dedicated Wi-Fi to Cellular gateway for operation.

The monitor uses a 2.4 GHz network, has a durable weather-proof enclosure and is powered by long-life replaceable battery which has an estimated 3-year life-cycle.



TSU 750



Optimize your routes

Accurate tank data ensures just-in-time collections and deliveries.

Optimize your efficiencies

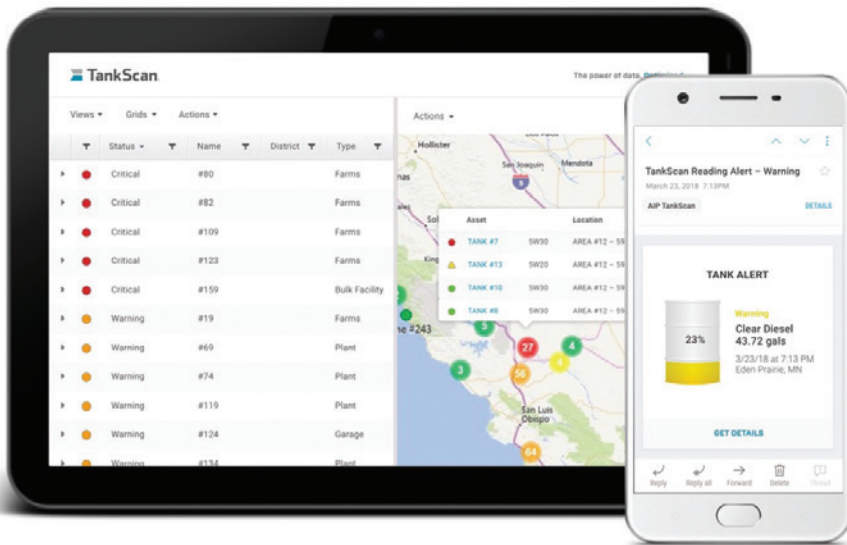
Reduce labor and transportation costs associated with manual tank measurement.

Optimize your growth

Add customers without having to add more trucks or drivers.

Optimize your service

Know when your customers' tanks need to be serviced before they do.



ATEK Intelligence Platform (AIP) Capabilities

Web-based software can be accessed from any Internet-connected computer.

- Scales from 1 to over 100,000 tanks
- User-friendly dashboard displays accurate measurements across all tanks
- Users can view multiple tanks to simplify site monitoring
- Email alerts provide notification when preset levels are reached
- Multiple users can be authorized to access various levels of data
- Analyze tank data with timely reports

Markets

- Diesel
- DEF
- Lubricants
- Waste oil
- Waste water

VIEW OUR FULL PRODUCT LINE AT TANKSCAN.COM

SPECIFICATIONS	
Measurement Range	5 inches to 115 inches (12.7 cm to 2.7 m)
Sensor Technology	Ultrasonic
Accuracy	< 1.0% at 22°C, 35% RH
Output	Transmits ID, Level Data, Temperature, Battery Level
Radio Communication	2.4 GhZ, 802.11 b/g/n Wi-Fi
Power Requirements	3.6V Li-SOCl2 Size R14 (C) (such as Saft LSH14)
Construction	Weatherproof Non-corrosive, IP67
Operating Temperature	0° F to +122° F (-18° C to +50° C)
Weight	0.5 lbs Including Battery
Approvals	FCC ID: S6T750 RoHs Compliance ETSI EN 301 489-17 EN 301 489-7 EN 301 489-1 EN 61000-4-2/3 EN 55022, A1, A2
Product Warranty	1 Year, Excluding Battery
ORDERING INFORMATION	
Model Numbers	TSU750W1L1H0

201-0171-000 Rev. A 4/21



WARNING: Cancer and Reproductive Harm - www.P65Warnings.ca.gov

ATEK Access Technologies
10025 Valley View Road, Ste. 190
Eden Prairie, MN 55344 U.S.A.

PH: 1.800.523.6996
FAX: 1.800.589.3705
+1.218.829.9797

www.atekaccess.com



Access the power of technology.

©2021 ATEK Access Technologies, LLC. All Rights Reserved. TankScan images and marketing materials are protected by various patents, copyrights and/or trademarks. ATEK assumes no responsibility for any errors which may appear in this document, reserves the right to change devices or specifications detailed herein at any time without notice, and does not make any commitment to update the information contained herein. No licenses to patents or other intellectual property of ATEK are granted by the Company in connection with the sale of TankScan products, expressly or by implication.