

TSU Tank Monitor Setup Instructions



The power of data. **Optimized.**

IMPORTANT: To avoid having to completely reinstall these monitors, ATEK's Customer Care Team (CCT) must be called at 800-523-6996 prior to moving forward with any of these installation procedures. Do not begin the installation process without calling ATEK first.

Contents:

- TSU Tank Monitor
- Magnet Wand
- Hex Wrench
- 1" x 2" NPT Adapter

PART #	ACCESSORIES
TCU001	Monitor Battery
TCU002	1" x 2" NPT Adapter
TCU003	Magnet Wand
TCU004	Hex Wrench

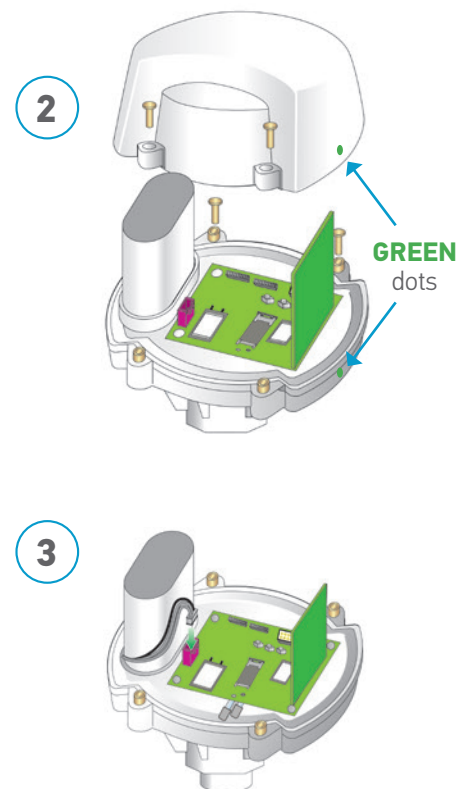


Take Measurements

- 1 Measure tank dimensions and fluid level of the tank. Record these measurements in the TankScan Site Install Data Form. Download at www.tankscan.com/resources/documentation. Send the completed form in to TankScan Customer Care Team per the instructions on the form.

Connect the Battery

- 2 Unscrew the four retaining screws and remove the enclosure cover. Take note of the orientation of the enclosure cover relative to the base as indicated by the **GREEN** dots.
- 3 Connect the battery cable to the connector on the board. Ensure the battery's wiring is not pinched when installing the cover.
- 4 Position enclosure cover over base using correct orientation and re-attach using retaining screws. Tighten screws completely to ensure a water tight seal by tightening until housing top and bottom meet then additional one quarter turn.



TSU Tank Monitor Setup Instructions

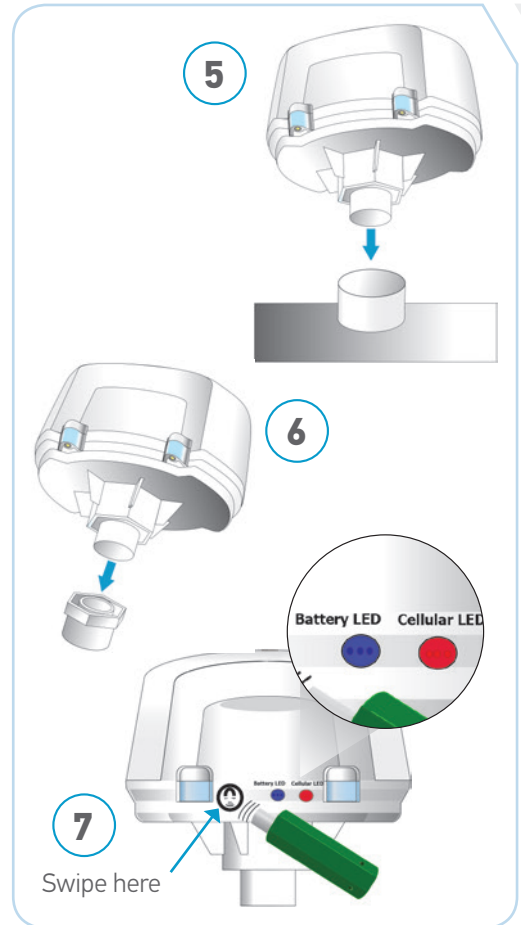


The power of data. **Optimized.**

Mount the TSU Monitor

- 5** The TSU can be connected directly to tanks with a 1" NPT threaded opening as shown in the following image.
- 6** For tanks with a 2" threaded opening, first connect the 1-to-2" NPT adapter that is included with the TSU monitor, then attach the unit to the tank as shown in the image.
- 7** Swipe the magnet decal with the magnet wand. This will wake up the monitor and send a report which will take several seconds to complete. Confirm LED activity per the monitor status chart below.
- 8** Call 800-523-6996 and ask for TankScan Technical Support after swiping monitor to complete monitor setup.

NOTE: Step 8 must be completed for the unit to function.



Monitor Status Chart

The network and battery LEDs will glow indicating the status of the monitor.

LED	COLOR AND LIGHT PATTERN	DESCRIPTION
Battery LED	Blink Red	Battery Health - Weak
	Blink Blue	Battery Health - Strong
Cellular LED	Blink Red	Not Registered to the Cellular Network
	Blink Blue (1 second ON - 1 second OFF)	Registered to the Cellular Network
	Glow Blue (for 3 seconds)	Data has been Successfully Sent

For configuration assistance, call TankScan Technical Support, 800-523-6996.



223-0150-000 Rev. C 5/18

ATEK Access Technologies
10025 Valley View Road, Ste. 190
Eden Prairie, MN 55344 U.S.A.

PH: 1.800.523.6996
FAX: 1.800.589.3705
+1.218.829.9797

www.atekaccess.com



Access the power of technology.