

# TSU1000 Cellular Tank Monitor Setup Instructions



The power of data. **Optimized.**

**IMPORTANT: At least 2 hours prior to installing, you MUST contact ATEK's Customer Care Team (CCT) at 800-523-6996 or CCT@TankScan.com.**

**Do NOT begin the installation process without contacting ATEK.**

## Take Measurements

- 1 Remove any equipment from tank port to be used by monitor if present. TSU monitor can be connected directly to tanks with a 1.5" or 2" NPT threaded opening.
- 2 Measure tank height from inside bottom of tank to top of tank port and to top of fluid level in tank. Record and report these measurements to CCT.  
**NOTE: If your monitor came with a stilling tube, install that now, follow included instructions.**

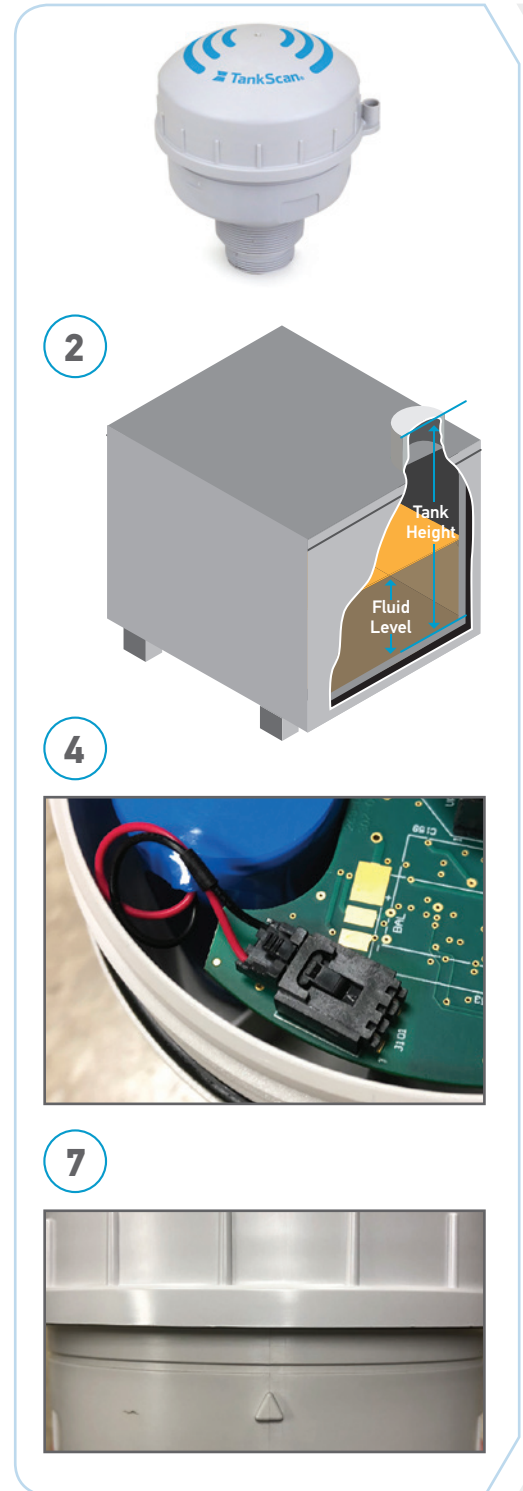
Tank Height: \_\_\_\_\_ Fluid Level: \_\_\_\_\_

## Connect Battery

- 3 Unscrew enclosure cover.
- 4 Connect battery cable to connector on circuit board as shown.
- 5 Reinstall cover and hand tighten.

## Install TSU Monitor

- 6 Screw TSU monitor into tank port
  - Seal pipe threads of monitor using product appropriate for this application prior to tightening into tank port.
- 7 Locate triangle indicator on outside of TSU monitor. Using magnetic end of screwdriver, swipe along rim above indicator until a beep is heard.
- 8 Call 800-523-6996 and ask for TankScan Technical Support after swiping monitor to complete monitor setup.  
**NOTE: Step 8 must be completed for the unit to function.**



223-0176-000 Rev. C 6/19

ATEK Access Technologies  
10025 Valley View Road, Ste. 190  
Eden Prairie, MN 55344 U.S.A.

PH: 1.800.523.6996  
FAX: 1.800.589.3705  
+1.218.829.9797

[www.atekaccess.com](http://www.atekaccess.com)



Access the power of technology.